



# Leave It In The Dressing Room

Managing and Navigating Personal and Professional Experiences



# The Dressing Rooms



# The Pre-Show (Early Morning)



# Intermission I

(Lunch)



# Intermission II

(The Drive Home)



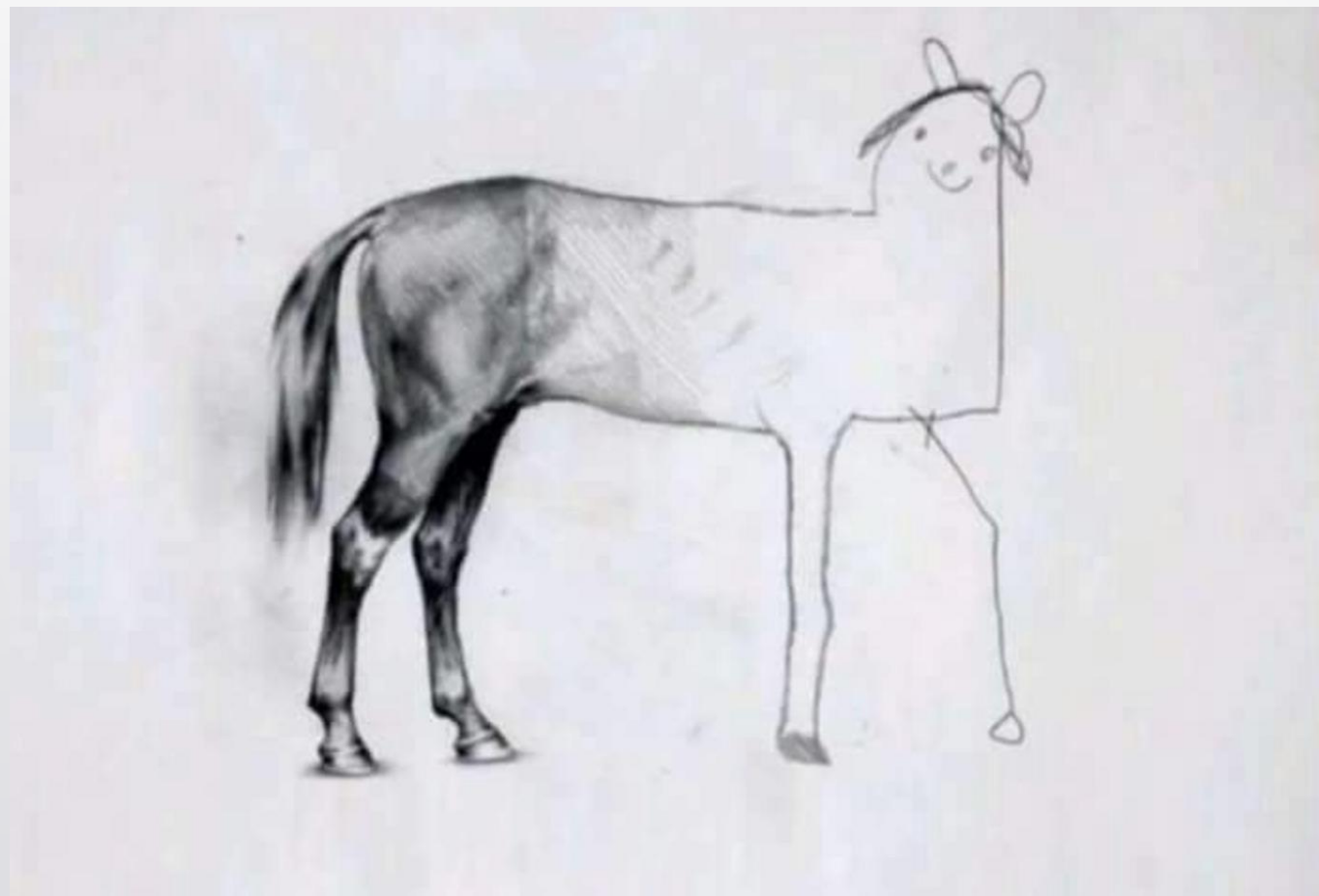
# End of The Day (Everything Else)



# The Pre-Show (Early Morning)

---

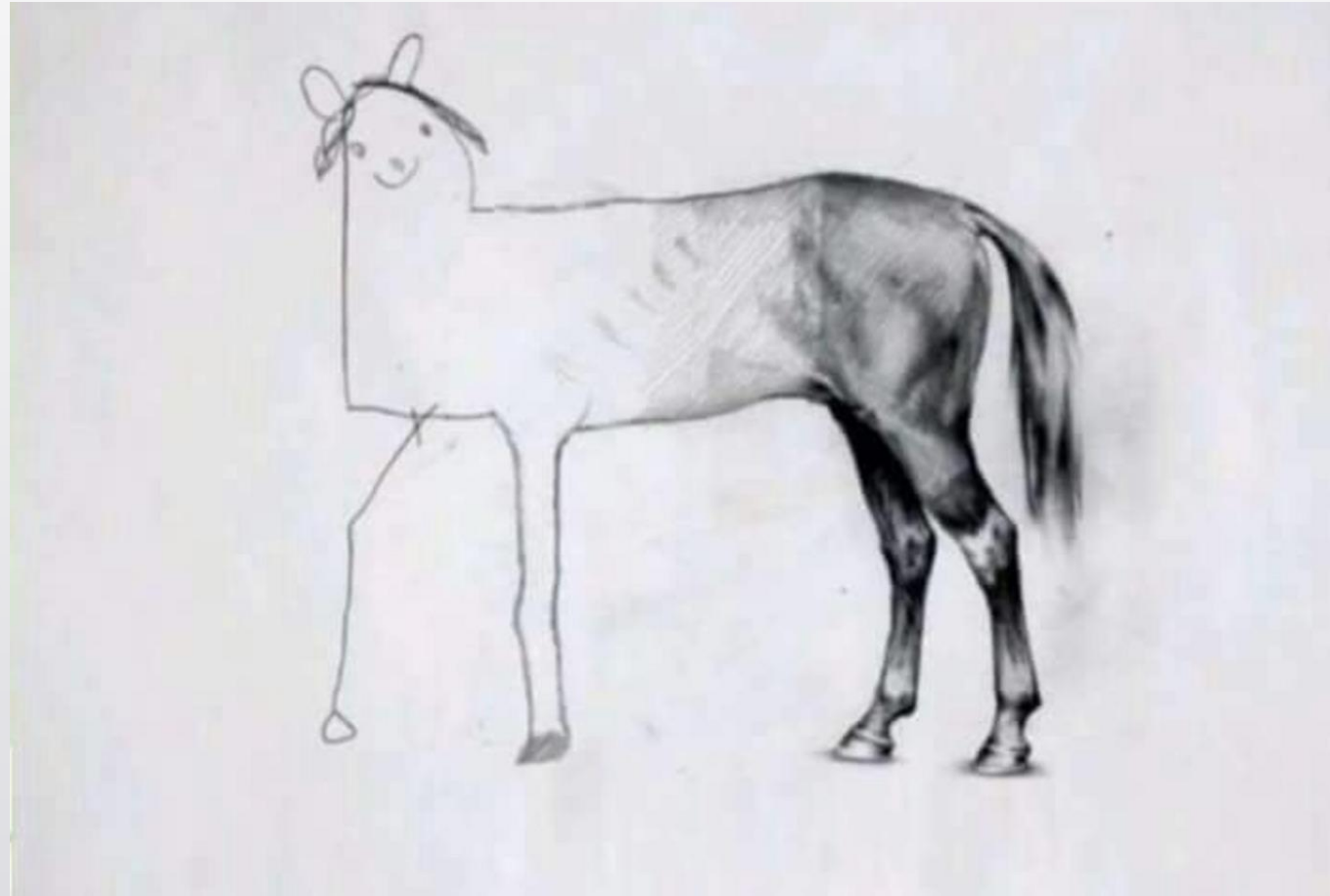
# Morning People





---

# Everyone Else





# The Pre-Show (Early Morning)

---

# Ellie & Reba





# Intermission I

(Lunch)



# Intermission II

(The Drive Home)



# End of The Day (Everything Else)



Who are we supposed to  
be?



What experience hinders  
you from being the best you  
that you can be?



---

# Your sphere of influence





How can we manage these  
experiences?



# The Neutral Zone



Communicate!



Final Thought.



# Leave It In The Dressing Room

Managing and Navigating Personal and Professional Experiences