

To setup your Keeper account click on the “Set Up Your Account Now” link provided in your email

Setting up your account is easy and takes less than a minute. Please create your Keeper account using the email address @tamuc.edu.

Verification Code:

Set Up Your Account Now

Please contact your Keeper Administrator, the IT Help Desk (helpdesk@tamuc.edu) if you have any questions or need assistance.

Thank you,

Keeper Team

After clicking the link provided the following screen will pop up and should connect automatically

KEEPER Enterprise SSO Login

Email
@tamuc.edu

Enterprise Domain
tamuc_sso

Connect to Identity Provider (IdP)

• • •

[Login with Master Password](#)

Once Keeper is connected to your account you will login through the SSO



Single Sign On

Username

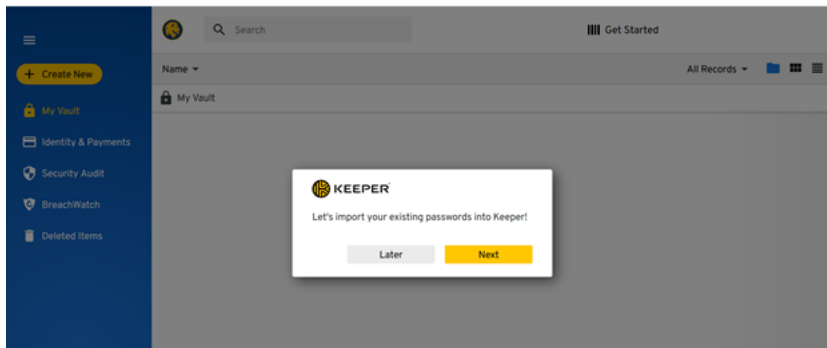
> [Forgot your password?](#)

Password

> [Forgot your CWID?](#)

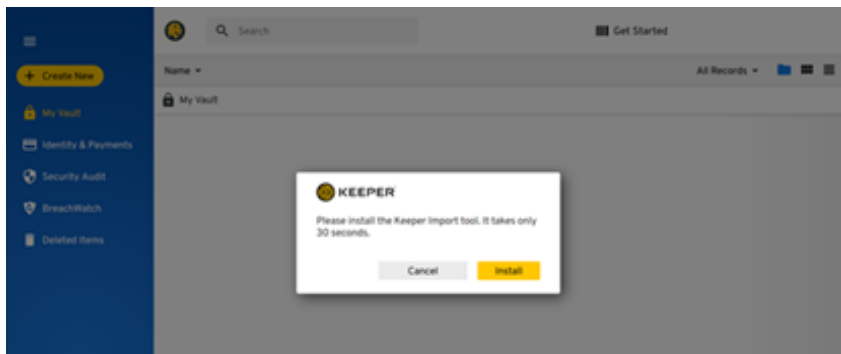
Once logged in Keeper will ask you to import your passwords

Select the option based on your preference

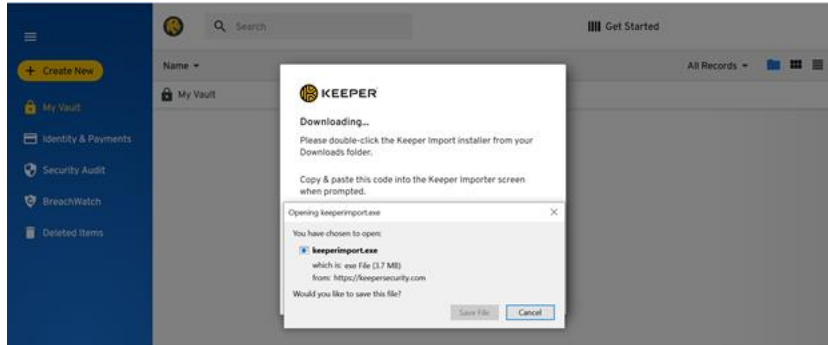


If you select "Next" the Keeper Import tool will need to be installed

Select "Install" to start the Keeper Import tool download

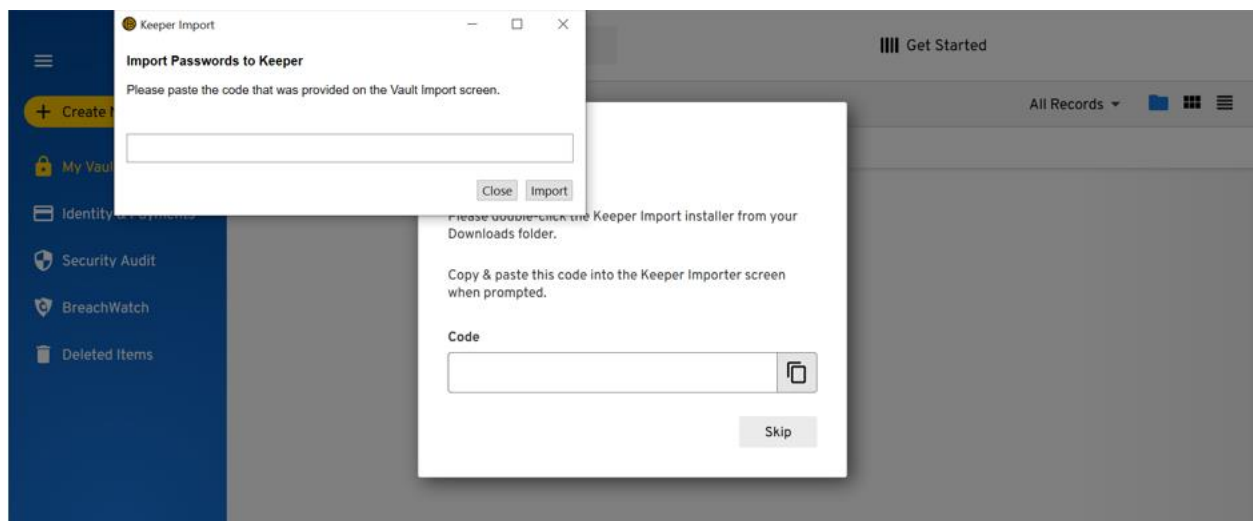


Save the Keeper Import tool file and run the application to install the program



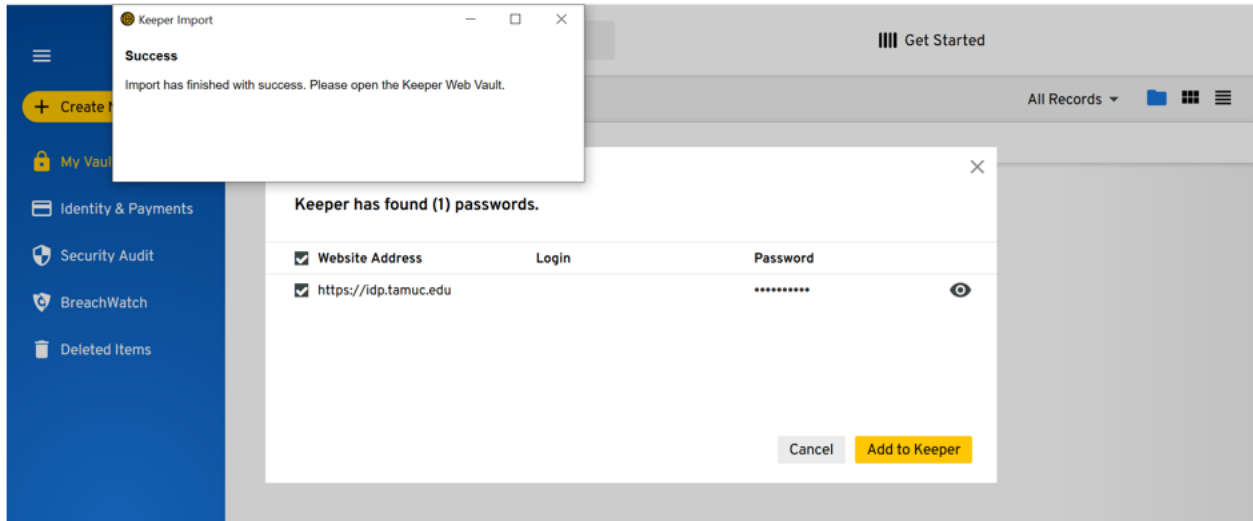
Once the application has been installed a code will be presented

You will need to copy and paste the code into the Keeper Import dialog box and select "Import"

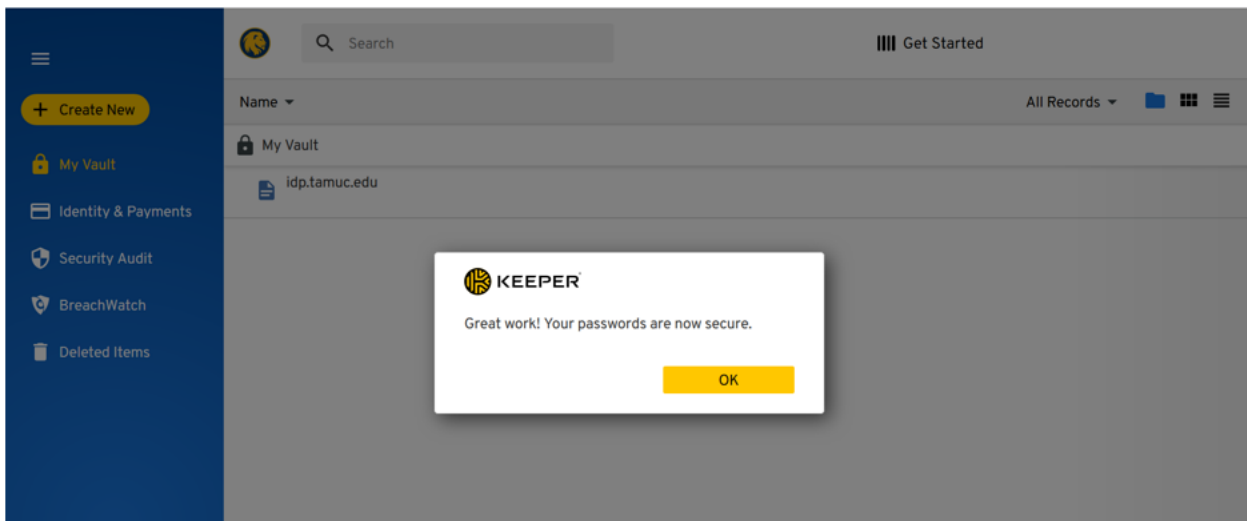


Once the Import has completed a list of passwords will be presented

Select which password(s) you would like to add and select “Add to Keeper”

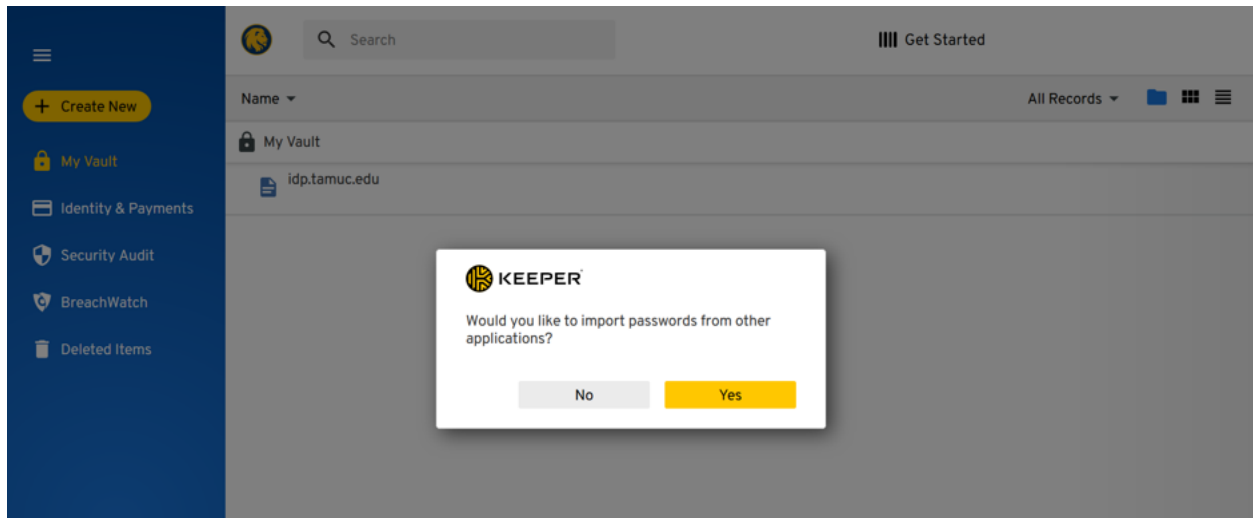


Once your passwords have been added to Keeper select “OK”



The next popup will ask if you would like to import passwords from other applications

Make the selection based on your preferences and follow the prompts given



Congratulations! You have successfully setup your Keeper account.

