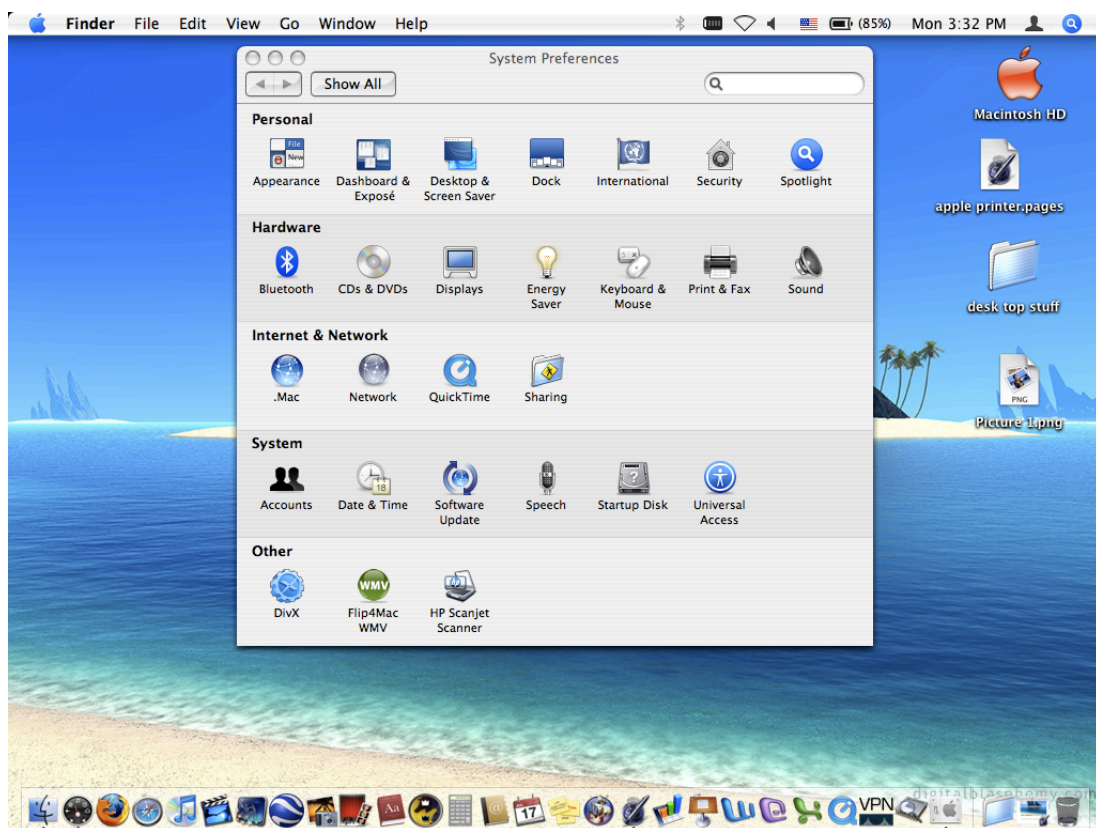


Apple printer to IP

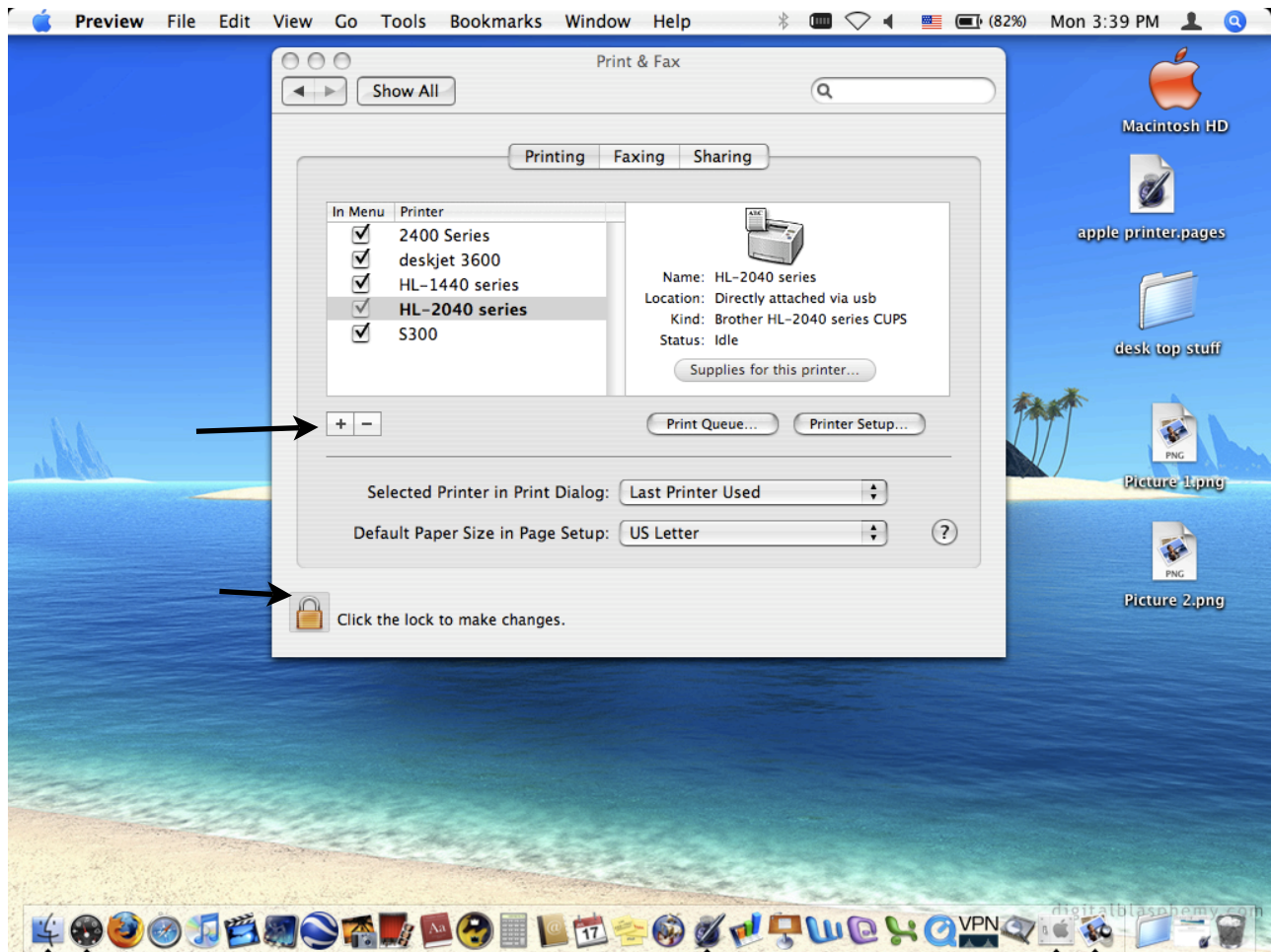


Open system preferences from the finder menu. Then select the printers&fax settings.

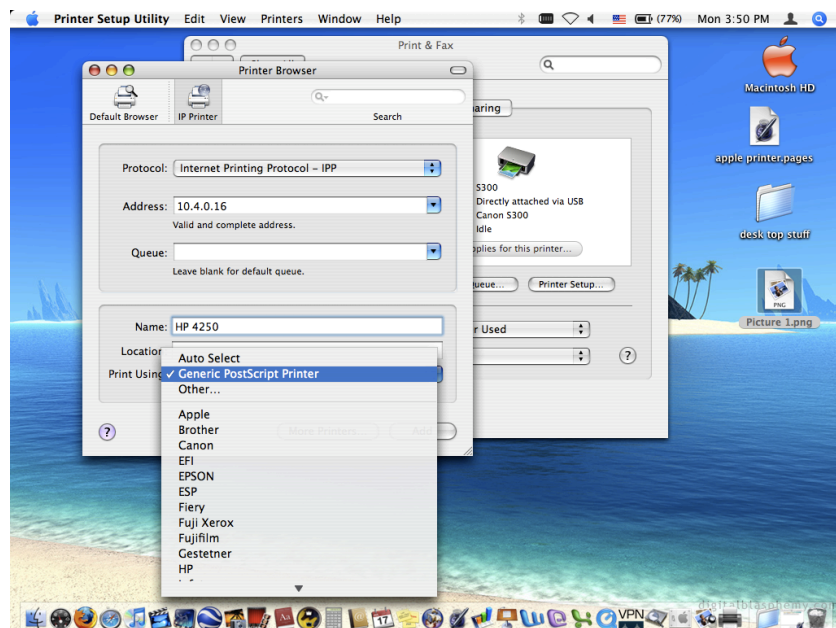


Apple printer to IP

This will bring up this screen unlock the lock at the bottom with the master password.

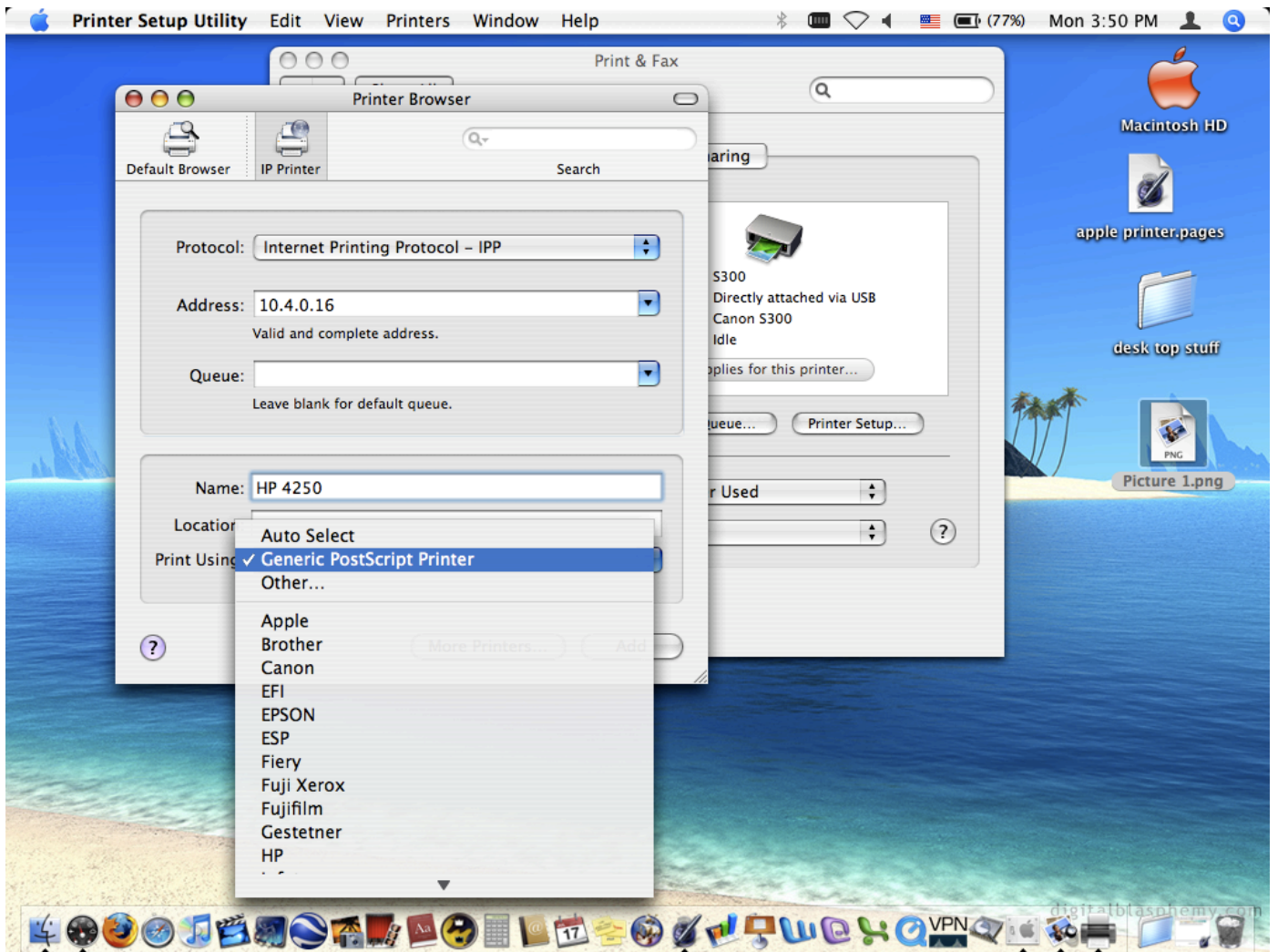


Then select the add button to set up a new printer. This will open the printer add window. This window will allow you to add a standard printer or an IP printer.

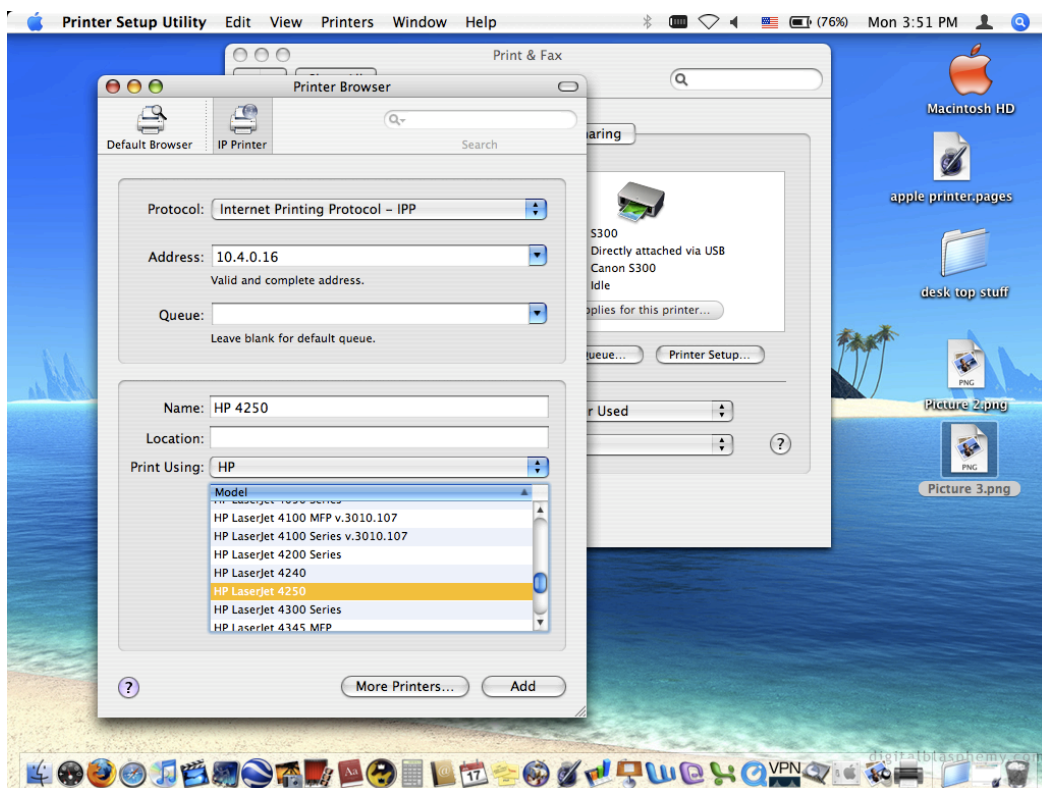
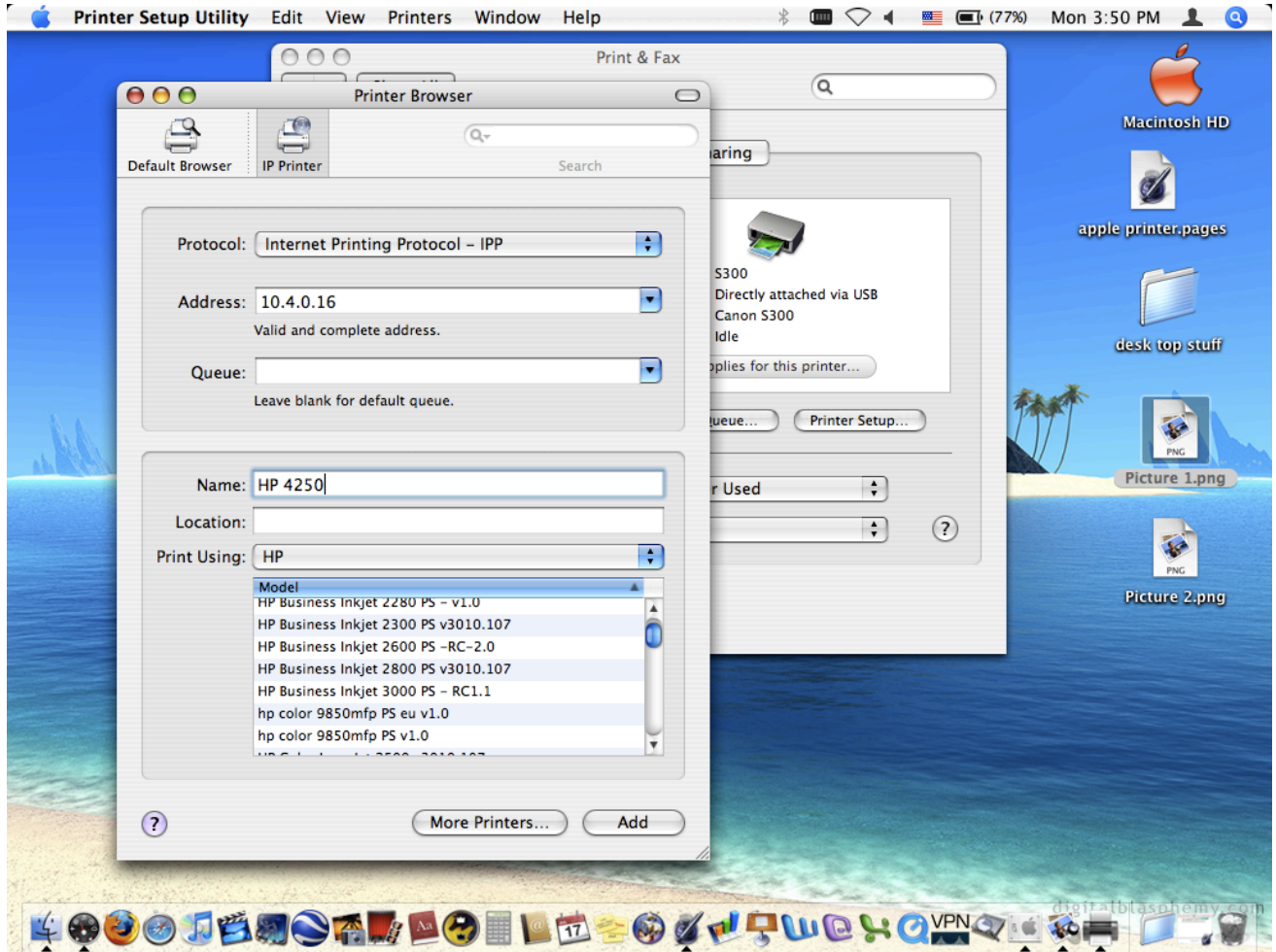


Apple printer to IP

Select the IPP protocol in the top box put the IP address in the next box name of the printer in the “name” box select the printer manufacturer from the list in the last box. This will allow you to select the model for the built in drivers that come with mac OS X (10.4 and up).



Apple printer to IP



Apple printer to IP