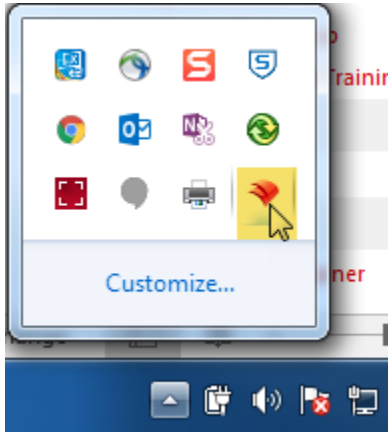
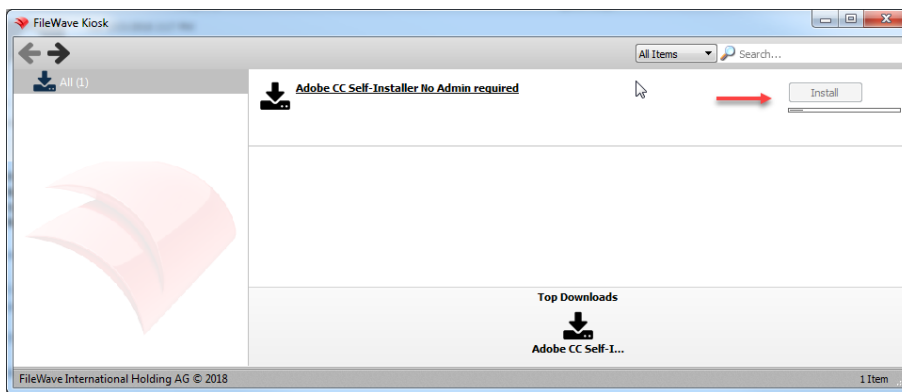


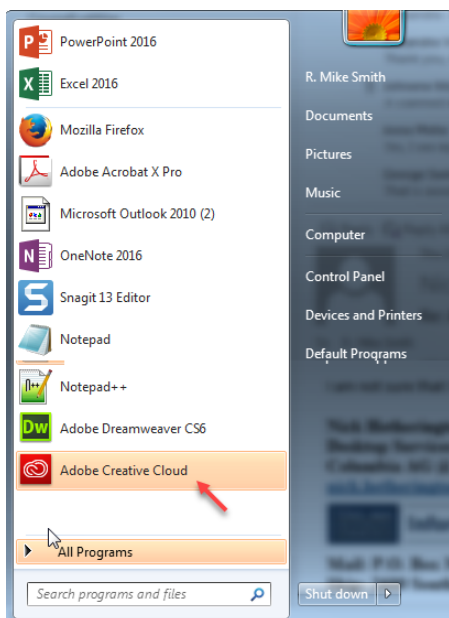
1. Select FileWave Kiosk Icon from system tray



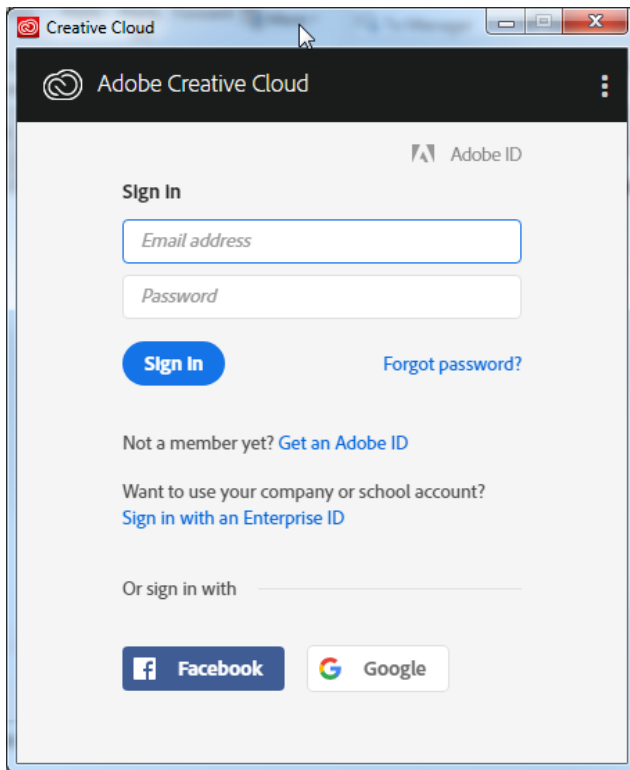
2. Click install from Kiosk screen. You will see a status "Install" bar



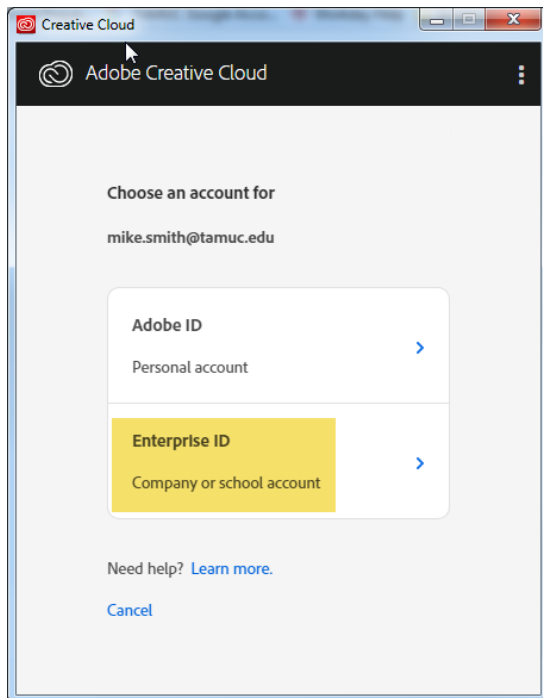
3. After the installation is done, you would see the Creative Cloud App in the start menu



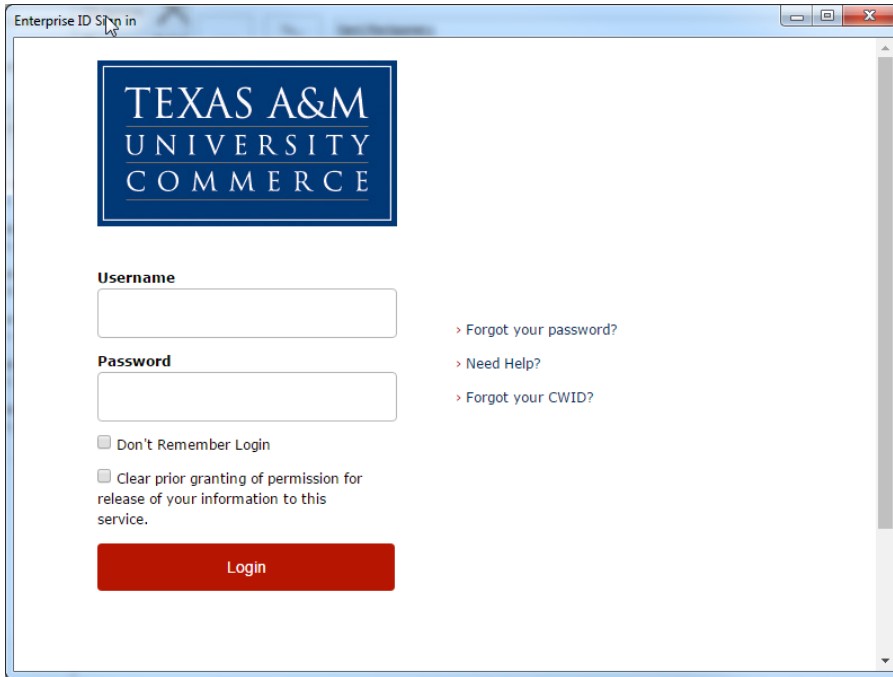
4. Selecting AdobeCC will prompt a sign in.



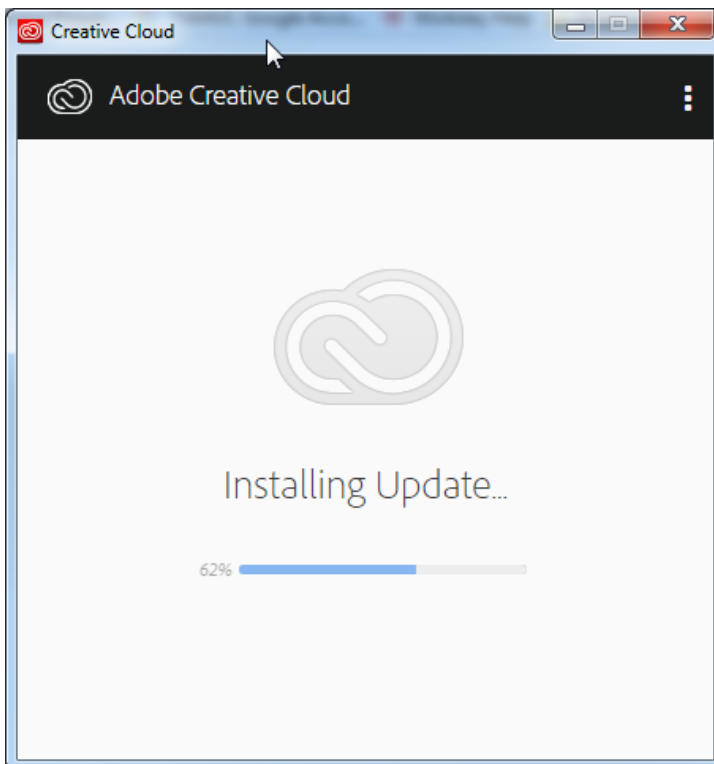
5. You will need to select Enterprise ID **only** if you previously had an Adobe account. *If you have not had an account before, skip to step 6.*



6. Authenticate with AD credentials



7. Creative Cloud may need to run an update



8. Select which Creative Cloud Apps you wish to have installed. Please install **only what you will need/use**.

